

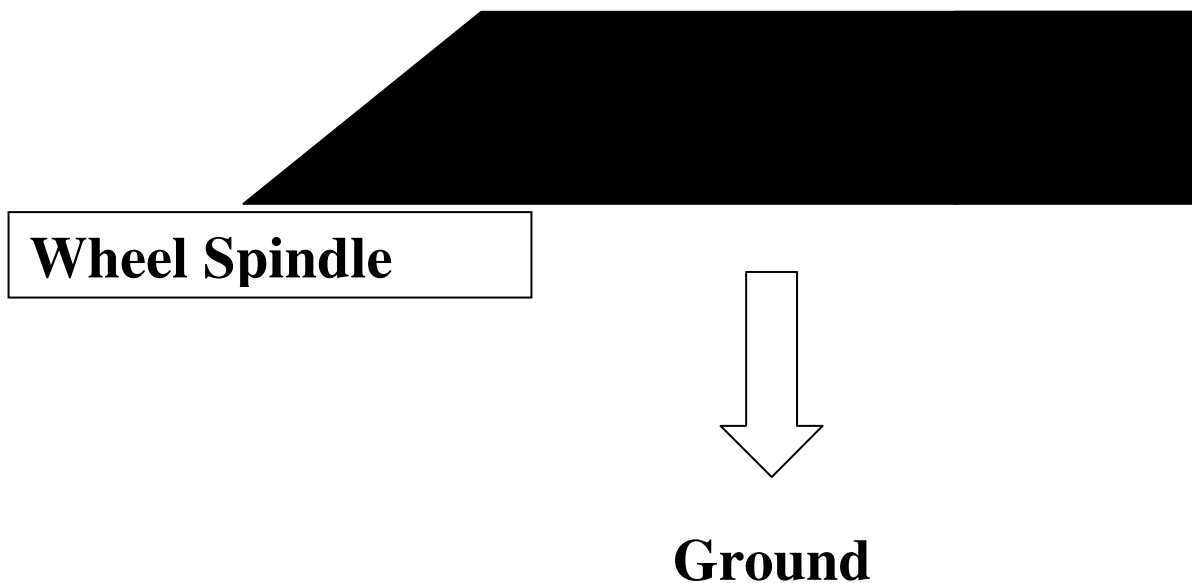
Installing Inflatable Kit on the SUT-300-U

The Kit has Two Features:

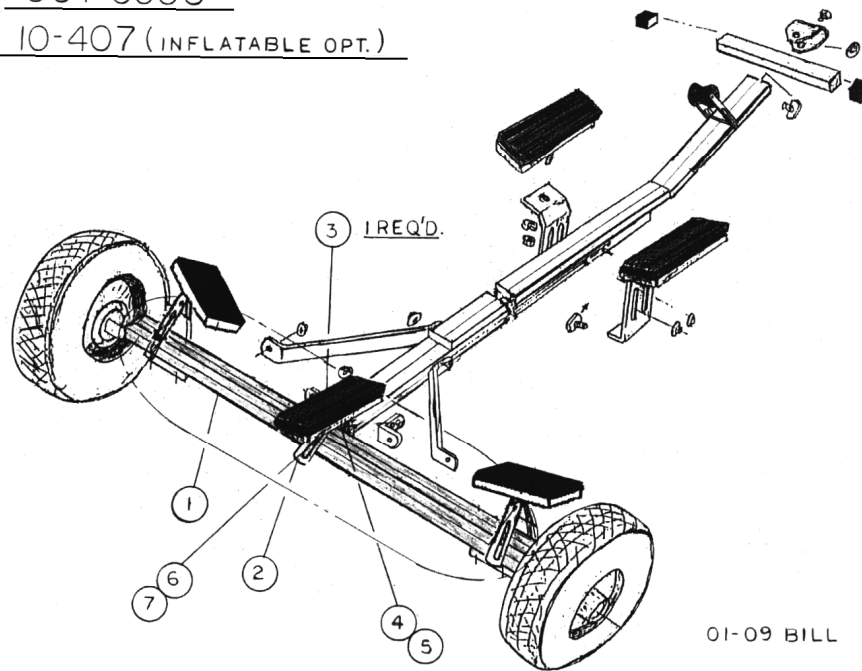
- 1. The standard 37" axle tube is replaced by the longer 58" axle tube**
- 2. A rear center transom support is added for supporting an outboard motor**



Axle Tube Note: The longer side of the tube faces downward toward the ground



SUT-300U
10-407 (INFLATABLE OPT.)



Refer to SUT-300-U assembly instructions for standard installation.

Replace original axle (part #1) with longer 58" axle.

See drawing above for rear transom support bunk and brackets placement

**See Parts List
(page 6)**



SUT-300-U Dolly - Installed Inflatable Kit



Dolly – Ready to Load



Adjust Outer Pads to Support the Tubes

PARTS LIST 10-407 (INFLATABLE OPTION/SUT-300U DOLLY)

01/14/09
REV.8/23/12

PART #	DRAWING #	DESCRIPTION
1-1253	1	TX-10 (NF) x 58" AXLE FOR INFLATABLE OPTION (ANGLE CUT BOTH ENDS)
1- 3078	2	1/4 x 2 x 10" OFFSET BRACKET (NF)
10-166	3	2 x 4 x 10" PADDED WOOD CRADLE W/PIVOT PLATE (HC-18)
8-308	4	3/8 - 16 x 3 1/4" H.H.C.S. (GRADE 5)
8-401NY	5	3/8" - 16 LARGE FLANGE NYLON INSERT HEX LOCK NUT
8-100	6	3/8" - 16 x 3/4" T-BOLT
8-400NY	7	3/8" - 16 SMALL FLANGE NYLON INSERT HEX LOCK-NUT